



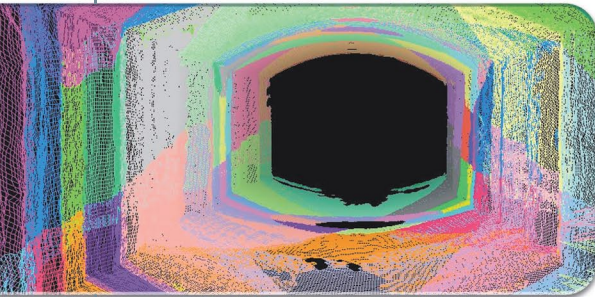
PolyWorks®

v12

PolyWorks | Surveyor™ V12

All the power of the renowned PolyWorks® industrial point cloud solution in a new, affordable point cloud package dedicated to surveying applications

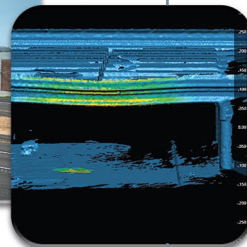
Benefit from the most powerful long-range point cloud registration toolbox



- Best-fit alignment
- Target-based alignment (automatic and interactive matching)
- Best-fit alignment constrained by targets or leveling
- Geo referencing

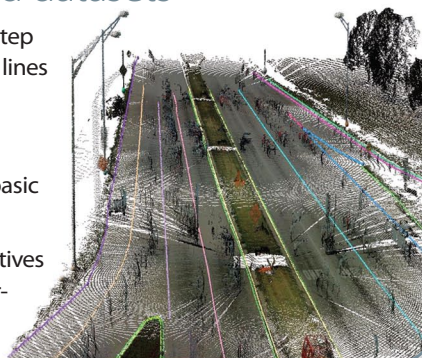
Monitor measured surfaces over time

- Point-cloud-to-point-cloud comparison
- Import of IGES and STEP files
- Point-cloud-to-CAD model comparison
- Visualization, analysis, and reporting of comparison results



Track and extract geometry in your long-range point cloud datasets

- Automatic tracking of sharp edges, step edges, pipe center lines, and colored lines
- Complete toolbox for creating and manipulating polylines
- Complete set of fitting routines for basic geometric primitives
- Complete toolbox to construct primitives from other primitives, including intersection and projection operations



Efficiently process very large datasets

- Native 64-bit version available for unlimited memory usage
- Tiling methodology for importing huge datasets and processing only a fraction at once
- Parallel processing on multi-core multi-processor systems

PolyWorks | Surveyor™ V12

The power of an industrial metrology solution in the hands of surveyors

Key features

- **Universal platform** that supports the native file formats of the major brands of time-of-flight and phase-based point cloud digitizers
- **Complete point cloud registration toolbox** that includes best-fit alignment of point clouds, automatic and interactive target-based alignment, best-fit alignment constrained by targets or leveling, and geo referencing
- **Complete toolbox to extract alignment points** by fitting geometric primitives on data points selected manually or using intensity information
- **Tiling methodology** to efficiently process huge datasets
- Import of CAD surfaces in **IGES** or **STEP** formats
- Flexible **cross-section generation** methodology
- **Powerful set of comparison tools** to compare two measured surfaces that includes point-cloud-to-point-cloud comparison, point-cloud-to-CAD comparison, cross-sectional comparison, and more
- **Complete toolbox to create and manipulate basic geometric primitives**
- **Complete toolbox to create and manipulate polylines** that includes the automatic tracking of sharp edges, step edges, pipe center lines, and colored lines
- **Typical survey measurements** such as azimuth, bearing, and vertical angles, horizontal, vertical, and slope distances, and volume to a reference plane
- **Optional PolyWorks/Modeler™ upgrade** to create and edit polygonal meshes from aligned point clouds
- **Optional PolyWorks/Inspector™ upgrade** to benefit from advanced industrial metrology capabilities, such as nominal-to-measured feature comparison, multiple data variability analysis, virtual caliper or profile gauges, and more
- **Xtreme graphical user interface** that offers fully customizable menus and toolbars, ideal for corporate-wide deployment
- **Free PolyWorks/IMView™ viewer** that maximizes corporate-wide information sharing among users, managers, and suppliers

Included with each license

- One year of technical support from highly skilled Application Specialists with optional annual renewals
- Access to InnovMetric's on-line technical support zone
- Access to a comprehensive network of partners that provide PolyWorks service work, like macro development and interface customization



Primary Applications

DOT and Civil Engineering
Mining
Geological Engineering
Architecture and Building Sites
Heritage Preservation

Supported languages

English
Japanese
German
French
Chinese (simplified & traditional)
Spanish
Portuguese
Italian
Russian
Czech

Supported Scanners and Formats

Optech (IXF, PIF, TXT)
Leica (PTX)
Riegl (3DD, RSP)
Faro (FLS, iQscan)
Surphaser (PTX)
Z+F (ZFC, ZFS)
3rd Tech (RTPI)
Callidus
Mensi (SOI)

System requirements

Windows 64-bit or 32-bit Edition (7/Vista/XP)
Dual-core processor or two processors
2 GB of RAM or more
2 GB of free disk space and 2 GB of swap space
OpenGL graphics board (NVIDIA is recommended)
3-button mouse or 2-button with wheel



Your One-Stop 3D Metrology Partner

www.innovmetric.com

Corporate Headquarters | InnovMetric Software Inc. 2014, Cyrille-Duquet, Suite 310, Québec QC G1N 4N6 Canada
Phone: 418-688-2061 | Toll free: 1-888-688-2061 | Fax: 418-688-3001 | info@innovmetric.com

Québec Canada | **Detroit**, MI, USA | **Los Angeles**, CA, USA | **Dallas**, TX, USA | **Salisbury**, NC, USA | **Pune** India | **Shanghai** China
Paris France | **Lindau** Germany | **Kaluga** Russia | **Bangkok** Thailand | **São Paulo** Brazil
Duwe-3d AG, partner office in Europe

© 2011 InnovMetric Software Inc. All rights reserved. PolyWorks® is a registered trademark of InnovMetric Software Inc. InnovMetric, PolyWorks/Modeler, PolyWorks/Inspector, PolyWorks/Inspector Probing, PolyWorks/Talisman, IMAlign, IMMerge, IMEdit, IMCompress, IMInspect, IMSurvey, IMTexture, IMView, and "The Universal 3D Metrology Software Platform" are trademarks of InnovMetric Software Inc. SmartGD&T is a trademark of Multi Metrics Inc. All other trademarks are the property of their respective owners.

